

SUPPLEMENTARY DATA APPENDIX

SD Table 1a. Regression Results: Marginal Probability Effects – Receiving SA								
	Singles		Couples with Children		Couples without Children		Single Parents	
	Probability	Marginal Effect	Probability	Marginal Effect	Probability	Marginal Effect	Probability	Marginal Effect
Baseline (1993)	14.53		7.40		5.16		43.64	
<i>Economic Vars.</i>								
Unemployment Rate	15.26	0.73	7.96	0.56	5.53	0.37	45.26	1.62
EI Index (100)	14.83	0.30	7.57	0.18	5.41	0.25	42.17	-1.47
S.A. Ben. Lev. (1,000\$)	15.43	0.90	8.01	0.62	5.46	0.30	46.47	2.83
<i>Year</i>								
1994	15.40	0.86	8.44	1.04	5.75	0.59	45.03	1.39
1995	16.72	2.19	9.92	2.52	6.59	1.43	47.63	3.99
1996	16.26	1.73	10.93	3.54	6.55	1.39	49.15	5.51
1997	16.56	2.03	11.10	3.70	6.74	1.58	48.80	5.16
1998	16.57	2.03	11.03	3.63	6.95	1.79	46.80	3.16
1999	15.97	1.44	9.81	2.41	6.60	1.44	41.90	-1.74
2000	15.92	1.39	9.56	2.16	6.70	1.55	40.43	-3.21
2001	15.21	0.68	8.74	1.35	6.44	1.28	36.59	-7.05
2002	14.25	-0.29	7.75	0.35	5.62	0.46	35.13	-8.51
2003	13.87	-0.66	7.52*	0.12	5.24*	0.08	34.02	-9.61
2004	14.55*	0.02	7.73	0.33	5.57	0.41	34.27	-9.36
2005	14.17	-0.37	7.71	0.31	5.88	0.72	32.82	-10.81

* Indicates not significant at 95% confidence level
 Source: Authors' calculations, Longitudinal Administrative Database (LAD).

SD Table 1b. Regression Results: Marginal Probability Effects – Entering SA								
	Singles		Couples with Children		Couples without Children		Single Parents	
	Probability	Marginal Effect	Probability	Marginal Effect	Probability	Marginal Effect	Probability	Marginal Effect
Baseline (1993 – 1994)	3.00		1.45		0.76		9.70	
<i>Economic Vars.</i>								
Unemployment Rate	3.14	0.14	1.53	0.08	0.81	0.05	10.06	0.36
EI Index (100)	3.15	0.15	1.60	0.15	0.81	0.05	9.73*	0.03
S.A. Ben. Lev. (1,000\$)	3.20	0.21	1.54	0.09	0.78	0.02	10.20	0.49
<i>Year</i>								
1994-1995	2.71	-0.29	1.35	-0.10	0.72	-0.04	8.41	-1.30
1995-1996	2.49	-0.51	1.47*	0.02	0.69	-0.07	7.31	-2.40
1996-1997	2.62	-0.38	1.38	-0.07	0.69	-0.07	7.79	-1.92
1997-1998	2.34	-0.66	1.30	-0.15	0.63	-0.13	7.12	-2.59
1998-1999	2.14	-0.86	1.20	-0.25	0.60	-0.16	6.79	-2.91
1999-2000	2.00	-1.00	1.12	-0.33	0.55	-0.21	6.20	-3.50
2000-2001	2.13	-0.87	1.19	-0.25	0.58	-0.18	6.39	-3.31
2001-2002	1.87	-1.13	1.26	-0.19	0.60	-0.16	6.25	-3.45
2002-2003	1.99	-1.01	1.17	-0.28	0.50	-0.26	6.61	-3.09
2003-2004	1.94	-1.06	1.19	-0.25	0.54	-0.22	6.84	-2.86
2004-2005	1.90	-1.10	1.06	-0.39	0.49	-0.27	6.49	-3.22

* Indicates not significant at 95% confidence level
 Source: Authors' calculations, Longitudinal Administrative Database (LAD).

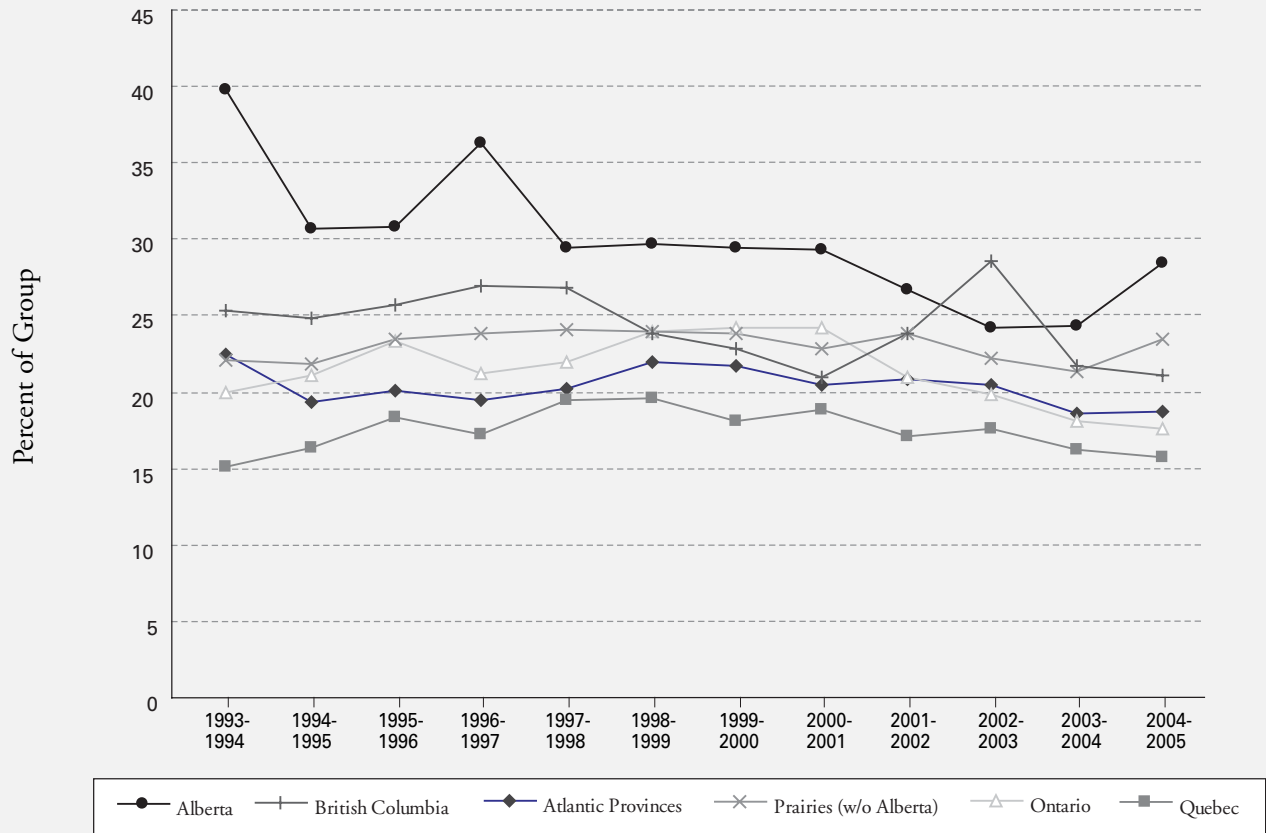
SD	Table 1c. Regression Results: Marginal Probability Effects – Exiting SA							
	Singles		Couples with Children		Couples without Children		Single Parents	
	Probability	Marginal Effect	Probability	Marginal Effect	Probability	Marginal Effect	Probability	Marginal Effect
Baseline (1994 – 1995)	34.25		45.35		55.92		20.19	
<i>Economic Vars.</i>								
Unemployment Rate	33.83	-0.42	44.66	-0.69	55.60	-0.32	19.64	-0.54
EI Index (100)	34.60*	0.35	45.62*	0.27	54.98	-0.94	21.41	1.22
S.A. Ben. Lev. (1,000\$)	34.23*	-0.02	45.05	-0.31	56.19*	0.27	18.97	-1.22
<i>Year</i>								
1995-1996	39.35	5.10	46.87	1.52	57.84*	1.93	23.90	3.72
1996-1997	37.89	3.64	48.54	3.19	55.20*	-0.72	25.27	5.09
1997-1998	38.57	4.32	50.94	5.58	56.29*	0.37	27.10	6.92
1998-1999	39.84	5.58	52.69	7.34	56.31*	0.39	29.64	9.45
1999-2000	38.71	4.46	52.47	7.12	56.60*	0.68	29.91	9.72
2000-2001	39.90	5.65	52.51	7.16	55.64*	-0.28	31.75	11.56
2001-2002	39.97	5.72	51.16	5.81	53.60*	-2.32	33.63	13.44
2002-2003	39.02	4.77	51.87	6.52	59.17	3.26	32.83	12.64
2003-2004	38.09	3.83	49.44	4.09	52.76	-3.16	30.65	10.46
2004-2005	36.64	2.38	50.14	4.79	53.43	-2.48	30.92	10.73

* Indicates not significant at 95% confidence level
Source: Authors' calculations, Longitudinal Administrative Database (LAD).

SD	Table 1d. Factors Contributing to the Decline in SA Exit Rates							
	Group		Demography	Unemployment Rate	EI Benefits	SA Benefits	Year	Total
Singles		Percentage Share of Impact on SA Rate	273.8	-59.2	33.0	-3.1	-144.6	100
		Percentage Point Change in SA Rate 1993-2005	-2.58	0.56	-0.31	0.03	1.36	-0.94
Attached no Child		Percentage Share of Impact on SA Rate	81.3	-10.5	-20.3	14.0	35.5	100
		Percentage Point Change in SA Rate 1993-2005	-5.56	0.72	1.39	-0.96	-2.43	-6.84
Attached with Child		Percentage Share of Impact on SA Rate	-40.9	33.3	-8.1	18.5	97.2	100
		Percentage Point Change in SA Rate 1993-2005	-2.00	1.63	-0.40	0.91	4.77	4.90
Lone Parent		Percentage Share of Impact on SA Rate	2.7	9.4	-12.0	24.1	75.8	100
		Percentage Point Change in SA Rate 1993-2005	0.4	1.41	-1.81	3.63	11.41	15.04

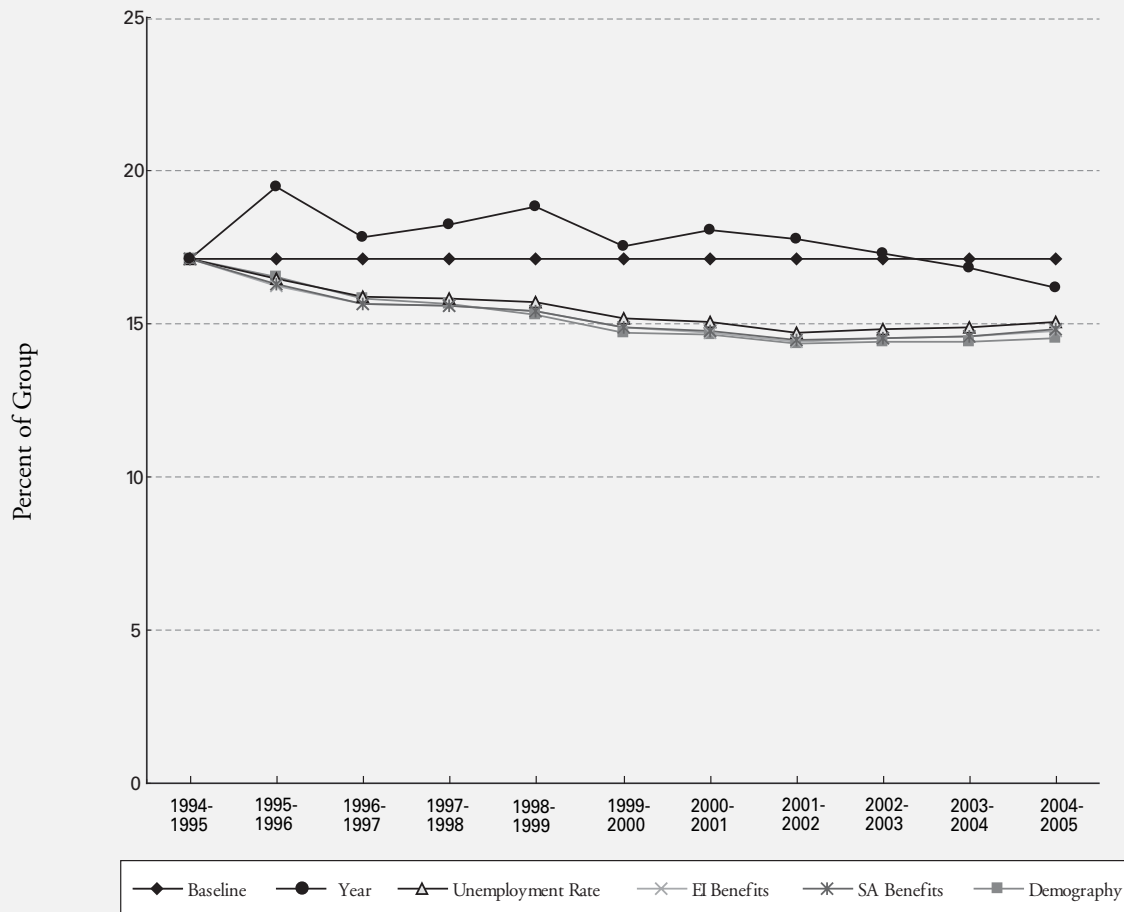
Source: Authors' calculations, Longitudinal Administrative Database (LAD).

Figure 1b: Exit rates 1993/94 – 2004/05 By Province



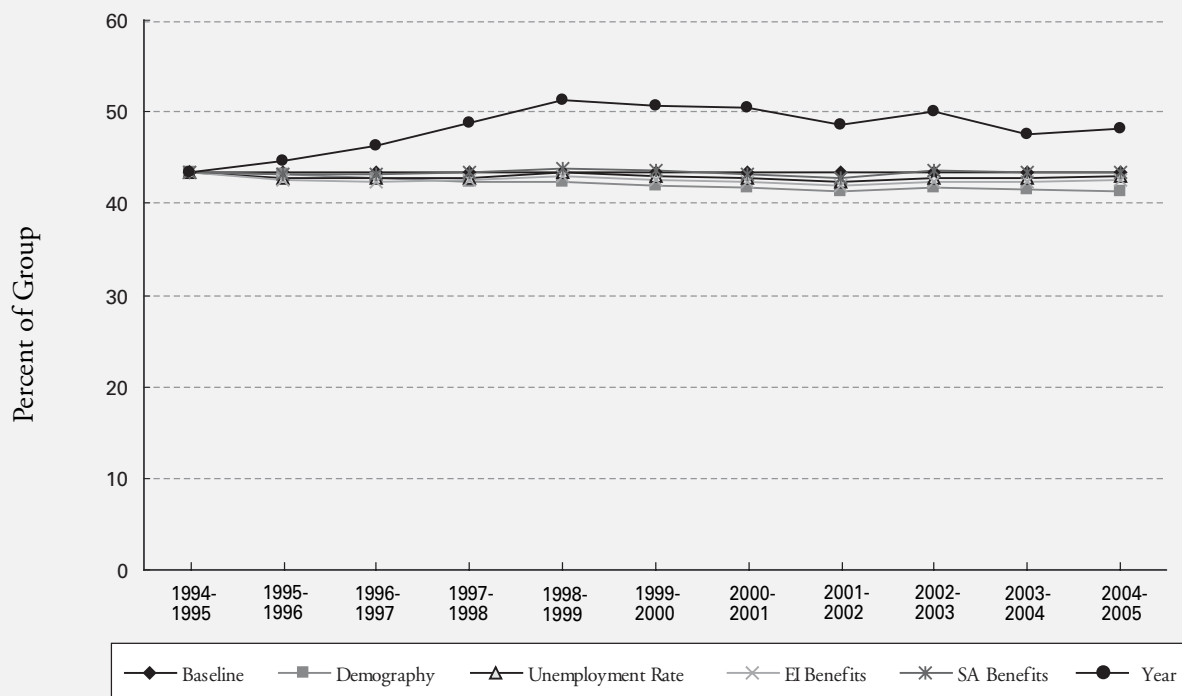
The percentage of groups for all family types in the Atlantic Provinces and Prairies is a weighted average using the population of the component provinces.
 Source: Authors' calculations, Longitudinal Administrative Database (LAD).

Figure 2a: Factors Contributing to the Decline in SA Exit Rates – Single



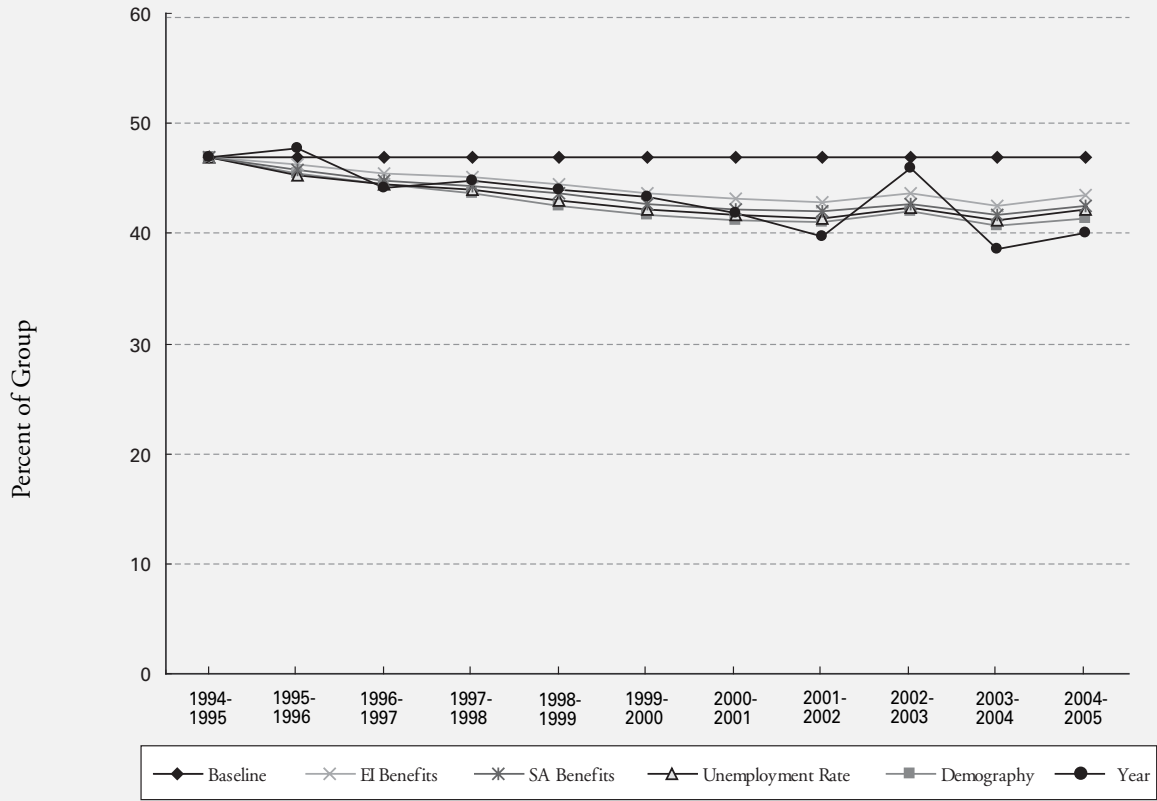
Source: Authors' calculations, Longitudinal Administrative Database (LAD).

Figure 2b: Factors Contributing to the Decline in SA Exit Rates – Attached with Child



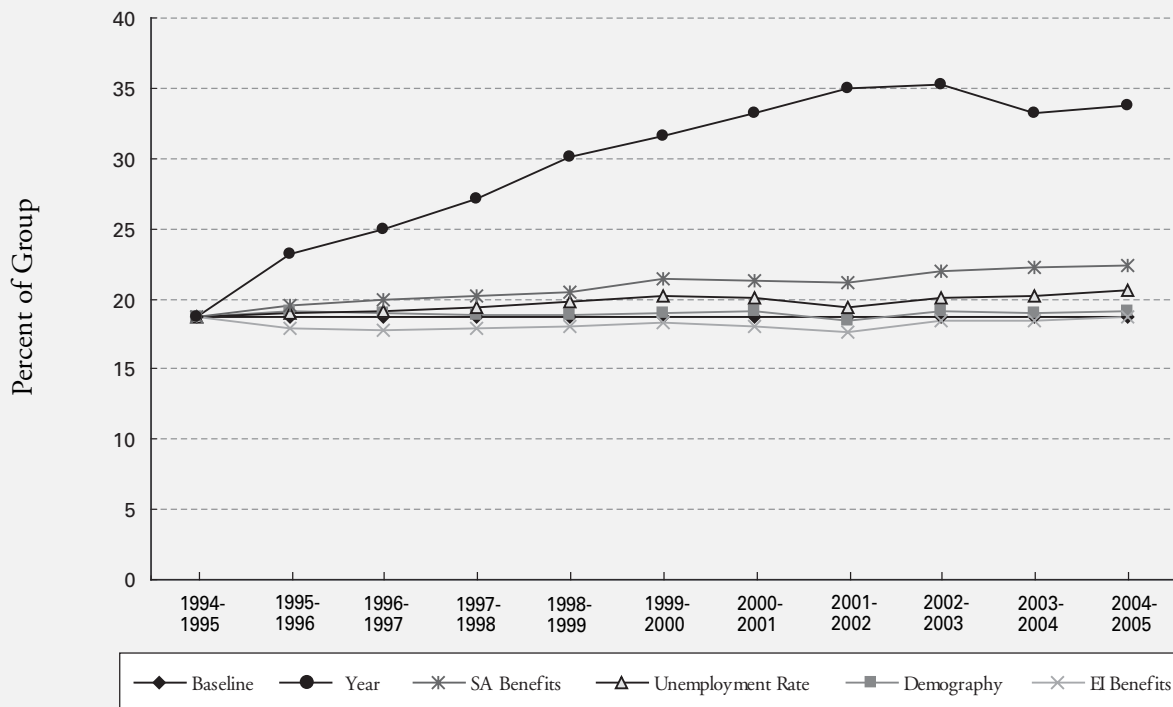
Source: Authors' calculations, Longitudinal Administrative Database (LAD).

Figure 2c: Factors Contributing to the Decline in SA Exit Rates – Attached no Child



Source: Authors' calculations, Longitudinal Administrative Database (LAD).

Figure 2d: Factors Contributing to the Decline in SA Exit Rates – Lone Parent



Source: Authors' calculations, Longitudinal Administrative Database (LAD).